



PSLE Scoring & S1 Posting

Supporting students and parents in
making informed school choices for
PSLE

Sharing About PSLE Matters



**How does the PSLE Scoring &
S1 Posting work?**

**How are students posted to
secondary schools?**

WHAT IS THE INTENT OF THE PSLE?



A useful checkpoint at the end of primary school

A fair way to determine secondary school posting



Over the years, we have been changing the education system to help our students discover and develop their strengths, interests, abilities and talents while moving away from an over-emphasis on academic results. Our PSLE Scoring system reduces the over-emphasis on academic results by:

1

Reducing fine differentiation of students' examination results at a young age.

2

Recognising a student's level of achievement, regardless of how his/her peers have done.

3

Encouraging families to choose secondary schools holistically based on students' strengths, interests and learning needs.

PSLE SCORING BANDS

a) Reduces fine differentiation of students' examination results at a young age

- Students with similar scores in each subject are grouped into wider scoring bands measured in 8 ALs.

b) Reflects a student's individual level of achievement


- Students' ALs for each subject reflect their level of achievement, rather than how they have performed relative to their peers.

AL	RAW MARK RANGE
1	≥ 90
2	85 – 89
3	80 – 84
4	75 – 79
5	65 – 74
6	45 – 64
7	20 – 44
8	< 20

Student Handbook, Pg 24

HOW DOES THE PSLE SCORING SYSTEM WORK?

- The overall PSLE Score is made up of 4 subject Achievement Levels (ALs).
- The PSLE Score can range from 4 to 32, with 4 being the best.



Elena		PSLE Score 14
PSLE Subject	AL Score	
English	2	
Math	2	
Foundation Science	AL A = 6	
Mother Tongue Language	4	


S1 POSTING

From the 2024 S1 cohort, MOE will facilitate the admission of P6 students into S1 through 3 Posting Groups: **Posting Group 1, 2 and 3.**

Objective: Ensures that schools continue to admit a **diverse profile of students** and students have **access to a wide range of schools.**

PSLE Score	Posting Group	Subject level for most subjects
4 – 20	3	G3
21 and 22	2 or 3	G2 or G3
23 and 24	2	G2
25	1 or 2	G1 or G2
26 – 30 (with AL 7 in EL and MA)	1	G1

EXAMPLE



Elena	
PSLE Score 14	
PSLE Subject	AL Score
English	2
Math	2
Foundation Science	AL A = 6
Mother Tongue Language	4

PSLE Score	Posting Group	Subject level for most subjects
4 – 20	3	G3
21 and 22	2 or 3	G2 or G3
23 and 24	2	G2
25	1 or 2	G1 or G2
26 – 30 (with AL 7 in EL and MA)	1	G1

GRADING OF FOUNDATION SUBJECT GRADES

- Foundation subject grades are graded in scoring bands from **AL A to C**.
- To derive a student's overall PSLE Score for S1 Posting, AL A to AL C for Foundation level subjects are **mapped to AL 6 to AL 8 of Standard level subjects respectively**.
- This mapping is based on the learning and assessment load of the subjects, and informs students of how ready they are for the curriculum in secondary school.

FOUNDATION LEVEL AL	FOUNDATION RAW MARK RANGE	EQUIVALENT STANDARD LEVEL AL
A	75 – 100	6
B	30 – 74	7
C	< 30	8

Student Handbook, Pg 25

ELIGIBILITY CRITERIA FOR HIGHER MOTHER TONGUE LANGUAGE (HMTL)

- The eligibility criteria for taking HMTL ensures that students can cope with the higher academic load.

ELIGIBILITY CRITERIA FOR HMTL

- (i) An overall PSLE Score of 8 or better**
- (ii) An overall PSLE Score of 9 to 14 (inclusive); and attain**
 - AL 1 / AL 2 in MTL or**
 - Distinction / Merit in HMTL**

- For students who do not meet the above criteria, secondary schools will have the flexibility to offer HMTL to students if they are assessed to have high ability and interest in MTL, and are able to cope with the learning load required.

HOW DOES THE S1 POSTING WORK?

- Your child has **six choices** in selecting their secondary schools.
- Your child will be posted to a secondary school based on **academic merit, i.e., PSLE Score**, and their **choice order of schools**.
- If two or more students with the same PSLE Score vie for the last remaining place(s) in a school, the following tie-breakers are used in the following order:
 1. **CITIZENSHIP**
 2. **CHOICE ORDER OF SCHOOLS**
 3. **COMPUTERISED BALLOTING**
- The tie-breaker based on school choice order recognises the different considerations that families have in making school choices.








Tie-breakers

in the new S1 Posting System

Tie-breakers are used only if there are two or more students with the same PSLE Score vying for the last available place(s) in a school.

Here's a simplified example.

5 students are vying for the last places in the schools of their choice.

Jane Singapore Citizen 16 pts	SCHOOL CHOICES: 1) Sch A 2) Sch ... 3) Sch ... 4) Sch ...	
Bryan Singapore Citizen 20 pts	SCHOOL CHOICES: 1) Sch B 2) Sch ... 3) Sch ... 4) Sch ...	
Mary Singapore Citizen 20 pts	SCHOOL CHOICES: 1) Sch A 2) Sch B 3) Sch C 4) Sch ...	
Alan Permanent Resident 20 pts	SCHOOL CHOICES: 1) Sch A 2) Sch B 3) Sch D 4) Sch ...	
Rina Permanent Resident 20 pts	SCHOOL CHOICES: 1) Sch A 2) Sch B 3) Sch D 4) Sch E	



Students with better scores will be posted first



Tie-breaker #1: Citizenship



Tie-breaker #2: Choice order of schools



Tie-breaker #3: Computerised balloting

Jane has a better PSLE score. She will be posted first, to **School A**.



Bryan, Mary, Alan and Rina have the same score.

As Jane has taken the last available place in School A, Bryan, Mary, Alan and Rina will vie for the last available place in their next choice, **School B**.

Bryan and Mary are Singapore Citizens. They will have priority to enter **School B**.



Alan and Rina will be tie-broken out as they are Permanent Residents. They will be considered for their next choice, **School D**.

Because Bryan ranked School B higher than Mary, he will be posted to **School B**.



Since Bryan has taken the last place in School B, Mary will be posted to **School C**.



Alan and Rina have both ranked School D as their third choice. They will go through computerised balloting to vie for the last remaining place in **School D**.

Through computerised balloting, Alan is posted to **School D**.



Since Alan has taken the last place in School D, Rina will be posted to her fourth choice, **School E**.



HIGHER CHINESE LANGUAGE (HCL) POSTING ADVANTAGE TO SAP SCHOOLS

Students who obtained a Distinction/Merit/Pass for HCL at the PSLE and an overall PSLE Score of 14 or better will receive a posting advantage when applying to SAP schools.

Students will be considered for admission to SAP schools in the following order:



7

NO HCL

Students with better PSLE Scores will be posted first, even if they did not take HCL



8

DISTINCTION



8

MERIT



8

PASS



8

NO HCL

Amongst students with the same PSLE Score, those with better HCL grades will be posted first

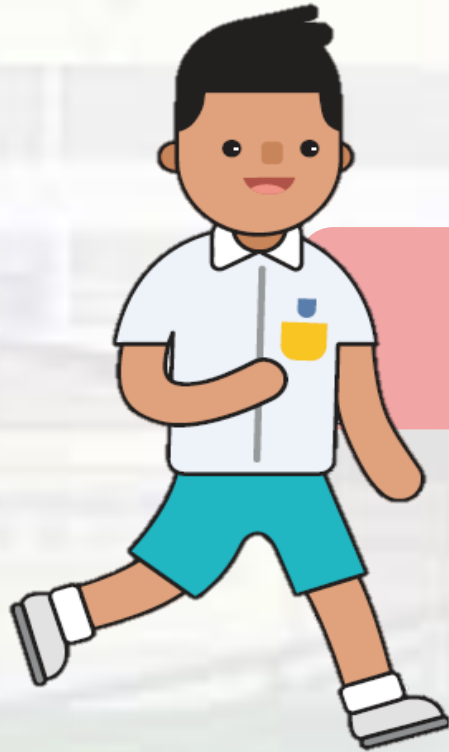


9

DISTINCTION

- Students' HCL results are denoted as 'D' (Distinction), 'M' (Merit) or 'P' (Pass).
- Students who obtain (i) a Distinction / Merit / Pass in HCL and (ii) a PSLE Score of 14 or better are eligible for posting advantage to SAP schools.
- Students are ranked taking into account their performance in HCL.
- This posting advantage applies before the tie-breakers for S1 Posting.

Understanding Full Subject-Based Banding (Full SBB)



What is Full SBB?

WHAT IS FULL SBB?

- Full SBB will be implemented in secondary schools from 2024, and aims for students to:



Have greater ownership of their learning according to their strengths, interests, abilities, talents and learning needs.



Develop a growth mindset and an intrinsic motivation to learn for life.



Have more opportunities to interact with friends of different strengths, interests, abilities and talents.



Have more options for post-sec pathways, while ensuring they have strong fundamentals and can thrive in their chosen pathway.

FULL SUBJECT-BASED BANDING (FULL SBB)



2020

- Full SBB pilot commenced in 28 secondary schools.
- The initial feedback from pilot schools has been positive.

Progressive
rollout of
Full SBB

2022-2023

- Around 90 schools have implemented aspects of Full SBB by 2023.



2024

- Remaining schools that admit students from 3 streams will be implementing Full SBB.
- Express, N(A) and N(T) streams will be removed for the 2024 S1 cohort onwards.
- Students will be grouped in mixed form classes in lower secondary.

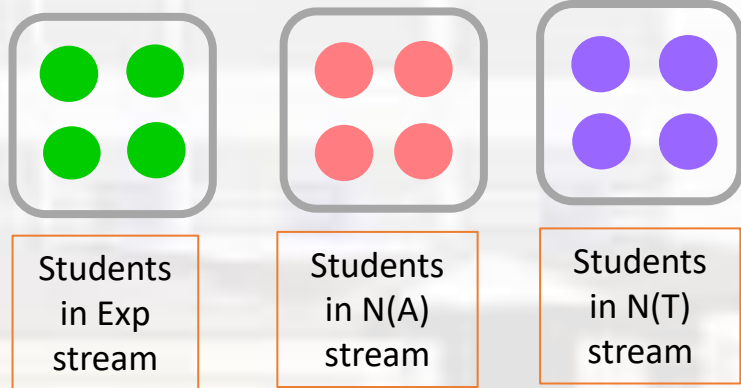


2027

- From 2027, students will sit for the Singapore-Cambridge Secondary Education Certificate (SEC) examinations, instead of the GCE N- and O- Level examinations.
- Students will receive an SEC which reflects the subjects and subject levels that they offered.

FULL SBB: MIXED FORM CLASSES IN LOWER SECONDARY

Form classes arranged by academic stream in schools yet to implement Full SBB



With Full SBB:
Mixed form classes



- Under Full SBB, students will be placed in mixed form classes in Lower Secondary to ensure a **mix of learner profiles**.
 - Provides students with **more opportunities** to interact with other students of different strengths and interests.
 - Enables students to **build meaningful friendships and learn to value different perspectives**.



Students posted through **PG3**



Students posted through **PG2**



Students posted through **PG1**

FULL SBB: COMMON CURRICULUM

Common Curriculum Subjects taken in mixed form classes (~1/3 curriculum time)

Examinable Subjects:

- Art
- Design & Technology (D&T)
- Food & Consumer Education (FCE)

Non-examinable Subjects:

- Character & Citizenship Education (CCE)
- Music
- Physical Education (PE)

- The six common curriculum subjects would each have a single syllabus for all students at Lower Secondary levels.
 - These subjects will be taught and assessed at a common level that is accessible to all students.
 - Teachers will adopt a range of approaches to cater to the different learning needs of their students.
- For other subjects, students attend classes with others taking the subject at the same subject level.

OFFERING SUBJECTS AT A MORE DEMANDING LEVEL AT THE START OF SEC 1

- Students posted to schools through PG1 and PG2 can offer **English Language, Mother Tongue Languages, Mathematics and Science** at a more demanding level based on their PSLE AL for each subject.

FOR STUDENTS POSTED TO SCHOOLS THROUGH PG1 AND PG2			
SUBJECT	PSLE SUBJECT LEVEL	PSLE AL FOR SPECIFIC SUBJECT	OPTION TO TAKE THE S1 SUBJECT AT :
• English Language • Mother Tongue Language • Mathematics • Science	Standard	AL 5 or better	G3 or G2
		AL 6	G2
	Foundation	AL A	G2

SUBJECT LEVEL FLEXIBILITY BEYOND THE START OF S1

- Beyond the start of Sec 1, students may **adjust their subject levels across their secondary school journey**.
 - Students may offer subjects, including English Language, Mother Tongue Languages, Mathematics, Science and Humanities subjects at a **more demanding level** if they meet the criteria and based on the school's holistic considerations.
 - Students who are not coping well may **offer subjects at a less demanding level**, based on their school-based performance and school's holistic considerations, to calibrate their curricular load.
 - In upper secondary, students may offer elective subjects (for example, Additional Mathematics, Art, Design & Technology) at a subject level suited to their strengths, interests and post-secondary aspirations, to **allow them to pursue their interests without adding unduly to their overall curriculum load**.
- Schools will consider **students' learning progress and developmental needs** when helping them determine their subject choices.

Useful resources

Quick tips on shortlisting secondary schools

A SECONDARY SCHOOL THAT'S SUITABLE FOR YOUR CHILD
Help them match the school to their strengths and interests.

ASK:
What are their strengths, interests, and abilities?
- What kind of courses, programmes and opportunities will develop these?
- Is the pace of learning suitable for them?

CONSIDER:
- School Culture
- Courses
- Programmes, Subjects and CCAs Offered
- Location and Transport
- If your child has Special Educational Needs
Select schools with specialised facilities or resources.

SUBMIT:
- 6 School Options
So that your child is more likely to get into a school of choice.
- Schools with Different Cut-Off Points
Consider all local 5-6 schools where your child's PSLE score is better than the school's Cut-Off Points.

REFER TO:
MOE's SchoolFinder
Check out schools' breadth of subjects offered, Co-Curricular Activities, location and contact information.

YOUR RANK OF SCHOOL CHOICES
The higher you rank your choice, the better your chance of getting into that school.
Score ranges can vary from year to year, since they depend on each child's performance and other factors.

Tools to use to explore secondary schools

SCHOOL FINDER

MySKILLSfuture



How-to-Guides to equip parents on how to use the tools

How to Use SchoolFinder
Ministry of Education SINGAPORE

<https://go.gov.sg/school-finder>



THANK YOU

