

# Sharing by Year Head (P1)



All Yuhualites can **ACHIEVE!**





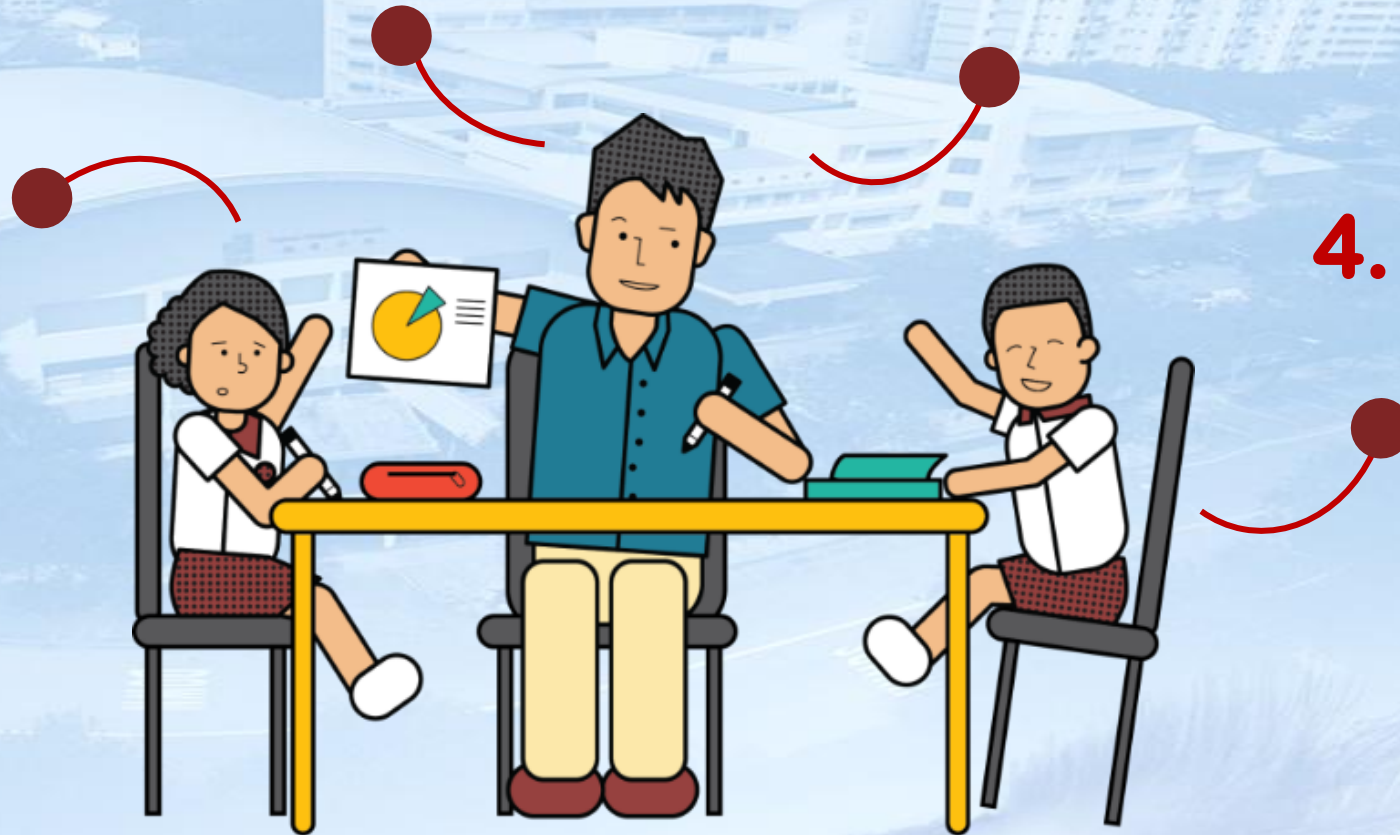
# Overview

**1.** What is Primary School about?


**3.** More about Primary One

**2.** Smoothing the transition to Primary 1

**4.** School-Home Partnership



# Building Strong Foundations

- 1. Play** is an essential feature that taps students' inquisitiveness and ignites a self-sustaining passion for learning.
  - Teachers **pace** teaching and adopt **developmentally appropriate, engaging pedagogies** to deepen learning.
  - 3. Differentiated support** for children with differing learning needs
  - 4. No examinations and weighted assessments at P1 and P2** to provide more time and space to settle into a formal school setting, build relationships and develop the necessary skills and attitudes towards learning.
- 
- An illustration of three children in school uniforms (two boys and one girl) carrying a large yellow pencil over their shoulders. The pencil is oriented horizontally, with the eraser on the left and the tip on the right. The children are walking towards the right. The background is a light blue sky with a faint cityscape.

Identified students will be **further supported** through **Learning Support Programmes** in English and Mathematics.



# Holistic Assessment (HA)

**Bite-sized assessment tasks** will be carried out throughout the year to gather information about students' achievement in relation to learning outcomes. These HA tasks provide feedback about students' learning.

- ❑ Performance Tasks Eg. Show & Tell, Speaking activity
- ❑ Written Exercises
- ❑ Classroom Quizzes

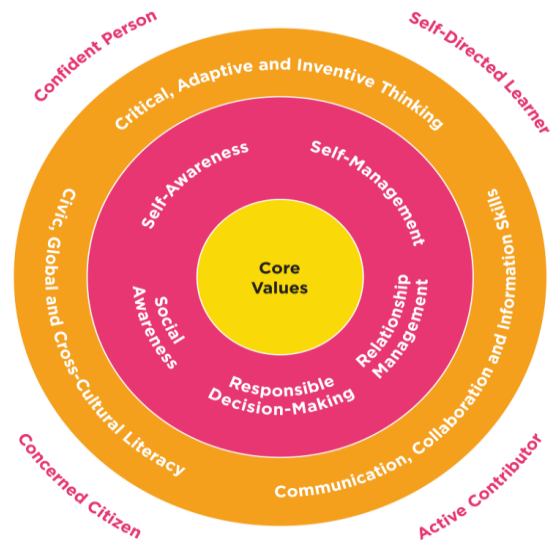


# Holistic development for Primary 1 includes:

Prioritising the development of soft skills, including values, social-emotional competencies and self-help skills

Focusing on building learning dispositions for lifelong learning, including curiosity, confidence and nurturing the joy of learning

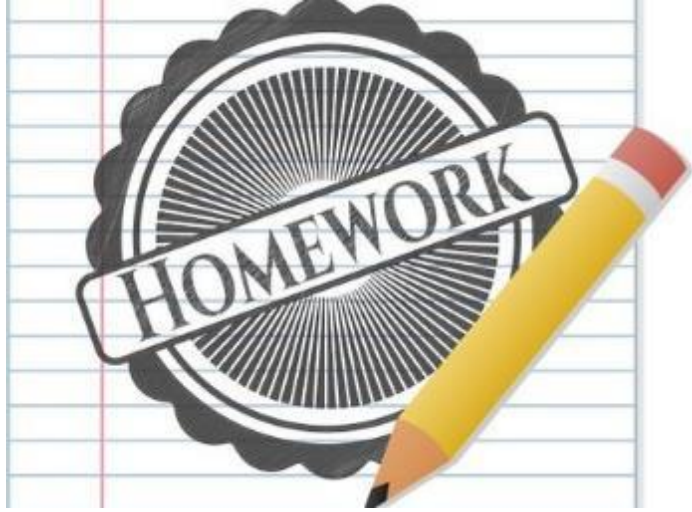
Building strong foundations in literacy and numeracy



Strengthening 21<sup>st</sup> Century Competencies and Digital Literacy in an age-appropriate manner



# Learning in school and at home



- **Homework Policy** is in place to guide parents on the extent of offline and occasional online homework that is given to the students.
- Homework helps teachers to assess students' understanding of their learning so that timely feedback can be given to support their learning.



- **Digital Tools** used by to support and complement classroom teaching and learning, e.g. Singapore Student Learning Space (SLS), eZhishi (for Chinese Language) and other educational platforms.



*SLS onboarding information will be shared with parents at the ICT Briefing.*

## What is SLS?

Our national online learning portal with curriculum-aligned resources for students to learn at their own pace and collaboratively.

## How and when will P1 students use SLS?

Students will learn with technology progressively in an age-appropriate manner.

Our students learn how to use technology during their FLIGHT lessons (every fortnight).

SLS homework are occasionally used to reinforce learning.



# Transition to permanent P1 classes and lessons

**Week 0 & 1 – In Orientation Groups (Familiarisation of routines)**

**Week 2 onwards – In permanent P1 classes (Formal lessons)**

**1 Joy**  
**1 Courage**  
**1 Kindness**  
**1 Gratitude**  
**1 Diligence**  
**1 Unity**  
**1 Honesty**



- English Language
- Mathematics
- Mother Tongue Languages (MT)
- Character & Citizenship Education (CCE)
- Physical Education (PE)
- Programme for Active Learning (PAL)
- Art
- Music
- Social Studies (SS)
- Form Teacher Guidance Period (FTGP)

# Quiz Time

Are there exams in P1?

(A) Yes

(B) No



(C) Not sure



**Holistic Assessments (HA) are bite-sized assessment tasks conducted throughout the year.**



# Help your child to develop good habits



# Help your child develop the habit of punctuality



7.40 am

Flag Raising ceremony



Arrive at the gate  
at 7.30 am.

All students must attend the Flag-Raising Ceremony, which **starts at 7.40 am daily**.

Students who miss the Flag-Raising Ceremony will be considered as late-comers. Students who are **late for 3 or more times** will have their names recorded in the School Offence Module and there will be implications on their conduct grade.

Parents are **strongly encouraged to ensure your child is punctual for school**, and to develop that good habit with them.



# Absence from School



Absence from school must be covered by an **MC** or a **letter from parents**.

You can call the office or email the Form Teacher.

Overseas LOA will **ONLY** be granted for the following **valid reasons**:

- ✓ Overseas posting of parents
- ✓ Bereavement of family members
- ✓ Serious medical reasons, e.g. seeking medical treatment
- ✓ Other valid reasons

Please note that overseas travel or taking a holiday during term time is **NOT encouraged** and approval will not be given.

# Submit the P1 Dismissal Form (by today)

1 <sup>st</sup> Week	5 Jan Mon	6 Jan Tue	7 Jan Wed	8 Jan Thu	9 Jan Fri
	Gate 1	Gate 1	Gate 1	Gate 1 or Gate 5	Gate 1 or Gate 5
	1 pm	1 pm	1 pm	1.30 pm	1.30 pm



- Students taking the school buses will be fetched at the usual dismissal time.
- Students enrolled in our school Student Care Centre(SCC) will proceed there after school.
- **Keep teachers informed of any changes to the dismissal arrangement.**



# Quiz Time

What time must Yuhualites arrive in school?

(A) 7.30 am



(B) 7.40 am

(C) 7.45 am



Flag-raising ceremony starts at 7.40 am. So arrive in school at 7.30 am.

# Quiz – TRUE or FALSE

P1 dismissal next Monday is at 1pm.



P1 dismissal next  
Mon, Tue, Wed is  
at 1 pm from Gate 1.



# Quiz Time – TRUE or FALSE

P1 dismissal next Thursday is at 1pm.

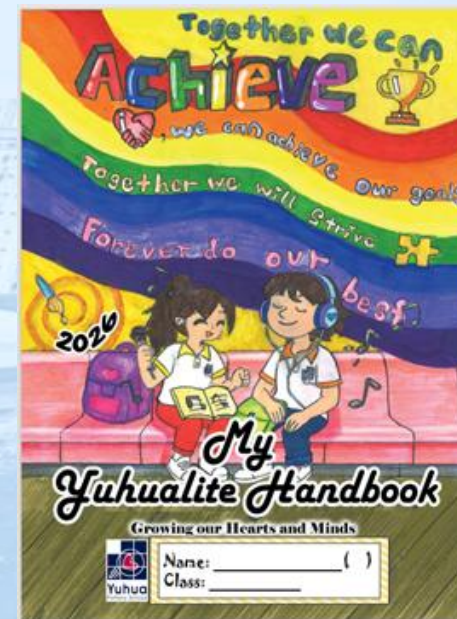


P1 dismissal next Thursday onwards is at 1.30pm from both gates.

# Communicating with the school

## Channels of communication:

- Parents Gateway (PG)
- Email & Student Handbook
- Phone call via General Office (GO)
- Make an appointment



## Allow our Teachers lead time to respond:

- Official contact hours (during school days) – 7.30 a.m. to 5.00 p.m.
- Give at least 3 school days to come back to you on the feedback
- If truly urgent, request for a return call via GO when they are back from class and are available to call you back.



# Real Connections

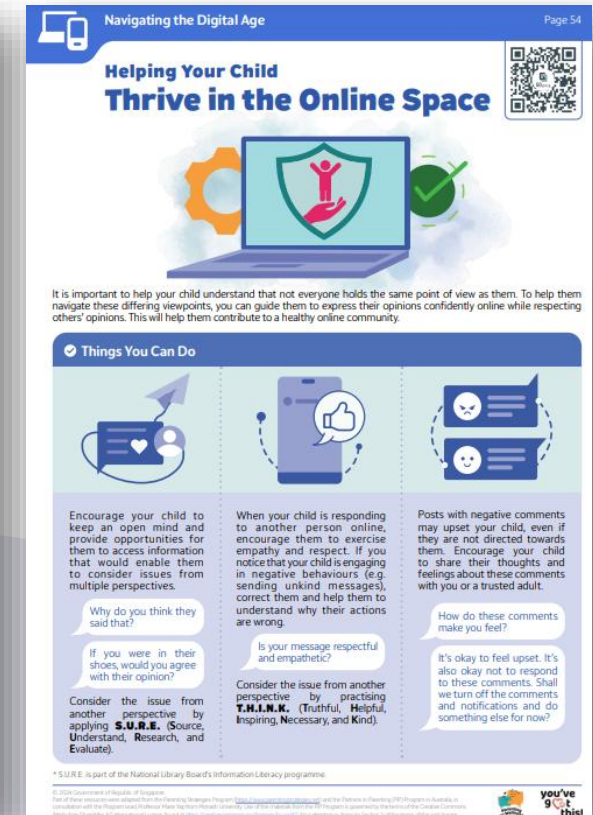
Cultivate strong relationships and healthy habits in this digital age

Establish good habits for our children to stay confident and in control of their technology use



Build strong bonds through shared experiences and meaningful conversations

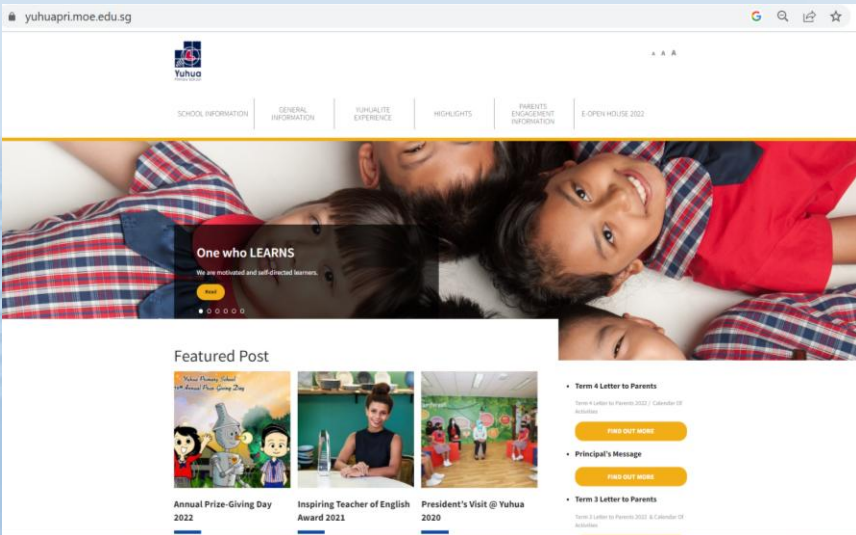
Provide a balanced mix of engaging online and offline activities, at school and at home



Check **Parenting for Wellness Toolbox** for conversation starters to facilitate meaningful conversations, and practical strategies on parenting in a digital age.



# Follow us on Social Media



Our School Website  
<https://yuhuapri.moe.edu.sg>



Our School Facebook Page  
<https://www.facebook.com/yuhuaprimarieschool>



Our School Instagram Page  
Search 'yuhuaprimarieschool'

Stay connected and be involved with what is happening in school!

Yuhua Primary School

*Growing our Hearts and Minds*





# Join Us! Parent Support Group (PSG)

A team of dedicated parents supporting each other in nurturing their children. Network, share and learn with fellow parents by involving yourself in initiatives such as Parenting Workshops.



<https://go.gov.sg/yhps-psg-recruitment-form>



# Thank You



Yuhua Primary School

*Growing our Hearts and Minds*

