



158 Jurong East Street 24 Singapore 609558
☎ 65605062 📠 65648278
✉ yuhua_ps@moe.edu.sg
🌐 schools.moe.edu.sg/yuhuaps

001/2024/T1/YHPS/PG

28 December 2023

Dear Parents/Guardians,

1. A Warm Welcome to 2024!

We hope this letter finds you and your family in good health and high spirits. As we embark on the new academic year, we are excited to welcome back our Yuhualites to another year of growth and learning. As we continue with the pursuit to develop our students holistically, we want to instil in them the belief that with a growth mindset and through dedication, hard work, and a willingness to embrace challenges, 'Every Yuhualite Can ACHIEVE'! We encourage our students to view learning challenges as stepping stones to success and to approach their education with a positive and resilient attitude.

To cultivate a growth mindset in our Yuhualites, the following messages are brought forth in the planning of our programmes and activities:

Mistakes Help Me Learn and Improve

We encourage our students to see mistakes as valuable learning experiences. When faced with a challenge, they should embrace the opportunity to analyse what went wrong, learn from it, and apply that knowledge to future endeavours, yet not be discouraged by learning setbacks which are part and parcel of the learning process.

I Challenge Myself to Learn New Things

We want our students to actively seek out learning challenges and view learning as a lifelong journey. By setting high yet realistic expectations for themselves and venturing outside their comfort zones, they will develop the skills and confidence needed to tackle any learning obstacle in life.

With Perseverance, I Know I Can Do It

Perseverance is a key component of a growth mindset. Students are encouraged to persist in the face of difficulties, understanding that effort and determination can lead to success. In school, we celebrate the resilience and efforts shown by our students and highlight the importance for them to stay committed to their goals.

My Effort and Attitude Make All the Difference

With a positive attitude and dedicated efforts, Yuhualites can create an impact on their personal growth. Students are encouraged to put in effective and self-directed efforts to achieve their goals and recognise that the process or journey is just as important as the outcomes or destination.

As we embark on this new academic year, we are committed to provide a nurturing and challenging learning environment that fosters a growth mindset in every Yuhualite. We look forward to partnering you to ensure our children's success as he/she 'ACHIEVE' their personal growth and goals this year.

2. Staff Movement

We would like to welcome our new teachers who joined our Yuhua Family from 1 January 2024. They are (in alphabetical order):

- Ms Elda Zarifah Binte Zamri – Teacher (Malay Language)
- Mdm Lee Yihui – Head of Department (Science)
- Ms Loh Chiow Chien – Senior Teacher (Chinese Language)
- Mr Lua Shixiong – Subject Head (Info. Communications and Technology)
- Mdm Tan Yi Bei, Sally – Teacher (English Language & Mathematics)

We would also like to congratulate Ms Celeste Chen Wei and Ms Ang Ying Ying on their official appointment as the Subject Head (Aesthetics) and Level Head (Science) respectively. We are confident that Ms Chen and Ms Ang will continue to do their best to develop our students holistically and help them reach their potential.

Mr Goh Han Serm will be joining us as our Flexi-adjunct staff after 28 years of teaching dedication to Yuhua Primary School. We would like to thank him for his unwavering commitment towards the growth and development of all Yuhualites, and are glad that he is able to continue to teach in another capacity.

3. First Day of School

As shared through the Parents Gateway (PG), Letter to Parents (Year-End) 2023 on 6 November 2023, the first day of school for our **P1 students is on Tuesday, 2 January 2024**, and for our **P2 to P6 students, their first day of school is on Wednesday, 3 January 2024**.

For our P1 students, please refer to the packing list given during the P1 Orientation Day held on 17 November 2023 for the required items they can pack in their school bags.

As for our P2 to P6 students, they should bring the following items for their first week of school:

1. Water Bottle
2. Story Book
3. Pencil Case and Stationery
4. Colour Pencils/Markers
5. Notebook
6. Oral Digital Thermometer (Check that it is working well)
7. Healthy Snacks for 9 a.m. and/or 12 p.m. Snack Break; Packed food or money for Recess
8. English, Mother Tongue, Music and Art - Books and Files (To be brought on Thursday, 4 January 2024)
9. Mathematics, Science, Social Studies and Health Education - Books and Files (To be brought on Friday, 5 January 2024)

Kindly note that the first week of school will be used to conduct orientation activities that will help all our students ease into their new class environment, foster teacher-student rapport, and bond with their classmates. These activities focus on the well-being of our students, allowing them to start 2024 on a positive note.

4. School Directions

Our school vision and mission will continue to guide us in providing a holistic and learner-centred environment for all our students, with enriching learning opportunities provided to engage them. Character development of our students anchored in sound school values will remain our priority.

School Mission	Growing Our Hearts and Minds
School Vision	An Yuhualite who Cares, Shares and Contributes; Learns, Thinks and Innovates
School Values	R ³ ICH: Respect, Responsibility, Resilience, Integrity, Care, Harmony
School Motto	Strive and Shine - Together we can ACHIEVE
School Strategic Thrusts	1. Yuhualites Our Focus (Flourishing Students) 2. Staff Our Asset (Thriving Staff) 3. Partners Our Support (Engaging Stakeholders)

Growing Our Hearts

The school values of Respect, Responsibility, Resilience, Integrity, Care and Harmony drive the school's culture of care. We place emphasis on inculcating strong values and building character in our students through our Character and Citizenship Education (CCE) Programmes. In CCE, our students learn to be responsible to their family and the community and understand their roles in shaping the future of our nation. Values-In-Action (VIA) and Co-Curriculum Activities (CCAs) are two key components in our CCE programmes. Our VIA programmes involve all our students contributing their time and efforts to serve the community at large. Our distinctive Learning for Life Programme (LLP) will continue to focus on building good character through Music and the Performing Arts.

Positive education undergirds the holistic development of our students. Through it, students learn to demonstrate grit, optimism, resilience, engagement and a growth mindset. This is carried out through an integrated approach that leverages the Student Management processes and programmes such as LLP, CCE and the Co-Curriculum. These efforts aim to enrich our students' positive emotional bank, inculcate values, develop responsible leadership skills and character strengths, build positive relationships, and strengthen their resilience.

In line with developing the character strengths of our students as part of our positive education approaches, our classes are named after the character strengths: **Joy, Courage, Kindness, Gratitude, Diligence, Unity, Honesty** and **Love**. In positive education, character strengths are widely valued positive traits, recognised and valued in almost every culture to help improve the well-being of individuals. Our students will learn about their class character strength, amongst all others, promote it and apply it in their daily lives.

Growing Our Minds

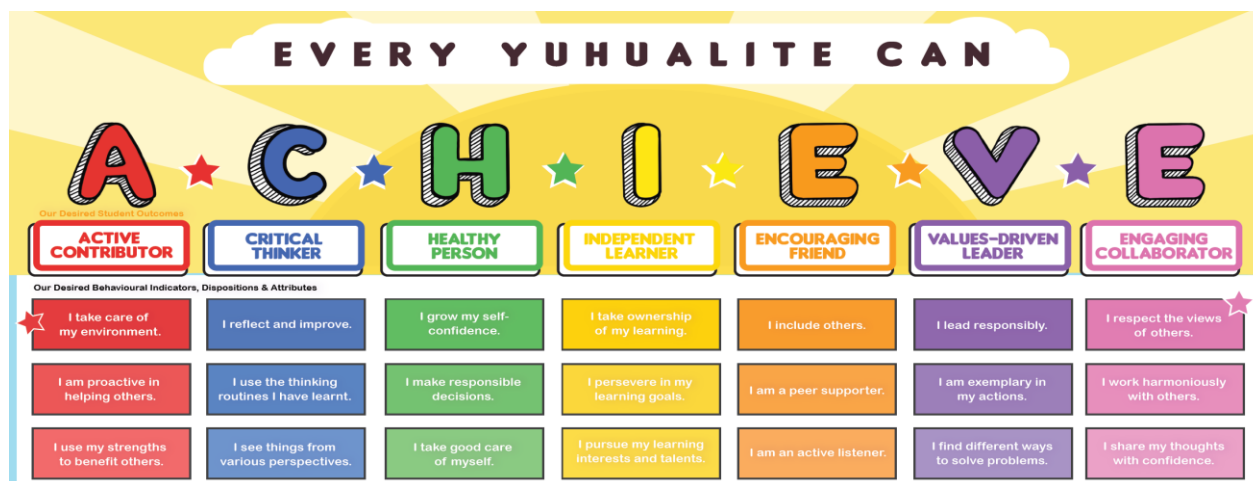
Think@Yuhua - Developing Critical and Creative Thinkers is the school's Applied Learning Programme. It aims to equip our students with critical and creative thinking (CCT) skills, 21st Century Competencies and dispositions that will prepare them to adapt and thrive in the rapidly-changing world. We aim to develop our students to be reflective and independent learners, having the love for learning and the ability to think critically.

The school adopts Paul's Wheel of Reasoning model to provide a focus in developing our students' CCT skills. Key questions are incorporated in lessons for teachers to engage our students through different levels of thinking and discussions during the lessons. Thinking Routines and Design Thinking, while harnessing the affordances of Information Communication and Technology tools are also integrated into our lesson design to encourage innovation and collaboration among our students.

The school continues to promote innovation in our students through our coding programmes such as the TechPlay 123 (P1 to P3) and the InnoMake Programme (P4 to P6) to encourage our students to explore the possibilities of digital making. The key objective of the programme is to empower our students to be digital creators and makers, so as to cultivate real-world problem-solving skills, develop computational thinking, and encourage digital creativity and innovation. At the P3 and P5 levels, elements of design thinking are also infused in the coding programmes to develop curiosities and foster the desire to solve problems in students. In addition to this, our P5 students will continue to be involved in a 10-hour Code for Fun (CFF) programme in 2024.

We are committed to grow the hearts and minds of our students and strongly believe that all Yuhualites can ACHIEVE. Our key programmes and activities will be constantly reviewed to ensure alignment to our Desired Student Outcomes as we develop our students to be future-ready, life-long learners.

Our Desired Student 'ACHIEVE' Outcomes as envisioned in 2022 remains as:



5. School-based Assessment Structures

The key aim of our school-based assessments is to develop academic literacies and life-long learning skills in our students as they strive towards being motivated and self-directed learners. Thus, Learn for Life, as a value, an attitude and a skill are what our students need to possess. It is in this spirit that changes to the school-based assessment structures have been made over the years to deepen the joy of learning and instill a stronger intrinsic motivation in our students to learn well.

Building on efforts to move away from an over-emphasis on academic results, we will continue to conduct our Term 1 to 3 Review Tests within the stipulated weeks, using varied alternative mode of assessments not restricted to just pen-and-paper test formats.

Students will be given the opportunity to demonstrate not only the concepts learned but the skills that they have acquired while adopting a growth mindset.

Assessment and Weightages for 2024

Information of the assessment and weightages in 2024 for each level is provided in the table below. This information is also available in your child's/ward's 2024 Student Handbook.

Level	Term 1	Term 2	Term 3	Term 4
P1	No weighted assessments			
P2	No weighted assessments			
Level	T1 Review Test	T2 Review Test	T3 Review Test	End of Year Exam (EYE)
P3	-	15%	15%	70%
P4	10%	10%	10%	70%
P5	10%	10%	10%	70%
Level	T1 Review Test	T2 Review Test	Prelim	PSLE
P6	15%	15%	70%	

Kindly note that only Medical Certificates and other valid official documents will be accepted for absences from any weighted assessments. For submissions of parent's letters, please state clearly the valid reasons for your child/ward's absence(s) and note that the school's Assessment Committee will review each letter/appeal on a case-by-case basis. There will be no make-up test(s)/assessment(s) conducted for absentees (including all holistic assessments) and marks will not be awarded for absentees without valid documents and reasons.

Lower Primary (P1 & P2)

Since 2019, there has been no weighted assessments for P1 and P2 students. The school will use subject-specific learning outcomes (LO) and qualitative descriptors to report P1 and P2 students' learning progress for all subjects at the end of Semester 1 and Semester 2. These will provide feedback to parents on our students' learning progress through the different modes of assessment completed by our students. Detailed information of these unweighted assessment tasks will be provided at the beginning of each term. A Holistic Development Profile (HDP) and portfolio will also be given to parents/guardians of P1 and P2 students at the end of each semester.

6. Temperature-Taking

The school will conduct the Temperature-Taking Exercise on Wednesday, 10 January 2024.

Every student must have a working Oral Digital Thermometer (ODT) in his/her bag. This is to ensure that he/she will be able to measure his/her body temperature and monitor it when necessary. If your child/ward is unwell, please bring him/her to seek medical consultation where needed, and he/she should not attend school until he/she is fully well. We would like to seek your assistance to ensure that your child/ward brings his/her ODT to school daily.

7. School Curriculum Hours and Co-Curricular Activities (CCA)

As shared in our Letter to Parents (Year-End) 2023, our school curriculum hours for 2024 are as follows:

Level	School Curriculum Hours
P1 to P3	Mondays to Fridays, (7.30 a.m. to 1.30 p.m.)
P4 to P6	Mondays, Tuesdays, Wednesdays & Fridays (7.30 a.m. to 1.30 p.m.)
	*Thursdays (7.30 a.m. to 2.30 p.m.)

CCA for P3 to P6 students will be conducted on every Tuesdays, from 7.30 a.m. to 9 a.m. during school hours and will commence in Term 1, Week 2. Consent form will be provided for selected additional CCA practices that take place after school hours.

The schedule and consent form for the After-School Programme (ASP) for identified P4 to P6 students will be given out at a later date. ASP will commence in Term 1, Week 4.

Learning with teachers' support and guidance can only take place with regular school attendance. We seek your kind cooperation that your child/ward attends school punctually and regularly every day so that he/she will have the opportunities to learn and grow together with his/her peers in a conducive school learning environment with strong home-school support. Absence from school must be supported by a medical certificate or other valid official documents and reasons.

8. Staggered Dismissal Timings

To ensure that there will not be any congestion at the different dismissal points, we have made arrangements to dismiss our P1 to P3 students slightly earlier than the rest of the levels as shown.

Level	Staggered Dismissal Time
P1 to P3	1.25 p.m.
	<u>*Note:</u> <u>Only P1 students will be dismissed at 1.00 p.m. on 3 Jan (Wed) and 4 Jan (Thurs).</u>
	<i>From 5 Jan (Fri) onwards, the dismissal time for all P1 students will be at 1.25 p.m.</i>

Parents/guardians will be informed if there are further changes to the staggered dismissal timings.

9. Meal Breaks in School

In 2024, with more created seating spaces in the canteen, we can better space out the snack and meal breaks for our students. Provisions have been made for two levels to have their recesses at the same time. This will also strengthen our Peer Buddy and Support Programme among the levels.

Levels/Recess/Snack Break	Timings
All Levels Snack Break 1	9 a.m.
Primary 1 & 4 Recess	9.30 a.m. to 10.00 a.m.
Primary 2 & 5 Recess	10.00 a.m. to 10.30 a.m.
Primary 3 & 6 Recess	10.30 a.m. to 11.00 a.m.
All Levels Snack Break 2	12 p.m.

The cost of recess and lunch meals is estimated at \$2.50 each. This is to ensure that the quality of food sold meets the basic nutritional needs of our students, and yet also provide reasonable balance between quality food, affordable prices, and business sustainability for our canteen vendors. Fruits are also served during recess together with the main meals to fully comply with the Healthy Meals in Schools Programme guidelines. Please also join us to encourage our children to avoid buying sweet drinks, and to bring their water bottle to school instead. We have water coolers located around the school for them to refill their bottles. A daily pocket money of \$2.50 to \$3.00 for meals during recess will suffice. If your child/ward is also staying for lunch, please prepare a similar amount as well.

Students are allowed to eat healthy snacks in the form of dry finger food either at 9.00 a.m. or 12.00 p.m. during their allocated Snack Time in class. Some examples of healthy snacks include: sandwiches, wholemeal biscuits, muesli bars, fruits (e.g. apples, bananas, grapes, etc.) and others. Having regular healthy snacks during the day helps students develop healthy eating habits and they may also benefit in terms of their cognitive, physical and socio-emotional development. Having this snack break before they go home can also help to ensure that they do not go hungry for an extended period of time. Our students will be taught how to choose healthy snacks during their Physical Health Education (PHE) lessons.

10. Student Handbook

All students will be issued a copy of the 2024 Student Handbook during the first week of school. Their Form Teacher will guide them on its use. We are pleased to share that the cost of the first copy of the handbook will be borne by the school. In the event that your child/ward requires a second copy or a replacement, he/she can purchase a new handbook from the school bookshop. Kindly note the school information provided in the handbook. It can serve as a handy resource for reference on school matters. Your child/ward will need to use the handbook to record his/her homework and assignments. Teachers may communicate with you through the handbook too hence please do check your child's/ward's handbook on a regular basis if that is the agreed mode of communication with his/her teacher(s).

11. School Uniform Matters

Asencio Pte Ltd is the school's school uniform vendor. You may purchase the school uniform from the vendor at the school canteen (in January), school bookshop (from February onwards) or from their main office at:

120 Hillview Avenue #05-01
Kewalram Hillview
Singapore 669594

Opening Hours: 9.00 a.m. to 5.00 p.m. (Monday to Friday)

9.00 a.m. to 1.00 p.m. (Saturday)

Daily Lunch Time is from 12 noon to 1 p.m.

For other enquiries, you can contact them through the following ways:

Email	sales@asencio.com.sg
Telephone	67643102
Fax	67641032

12. Visitor's Pass and Students' Safety

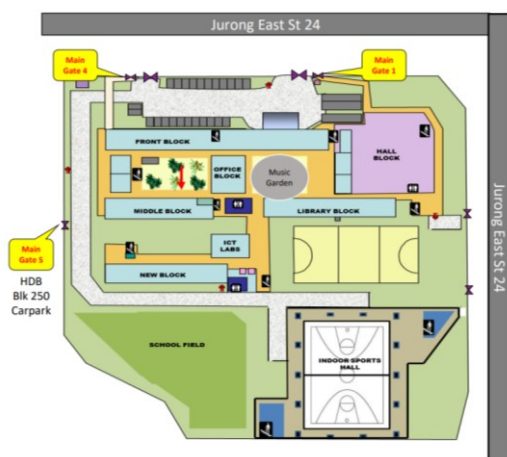
All visitors are requested to report to the Security Counter at the Main Gate and register their particulars with the security guards.

For security reasons, visitors are also required to produce their NRIC or other national identification document (driving license, work permit, passport, etc.) for verification purposes. The physical NRIC/ID document will be returned to the visitors after the verification of their identity and will not be retained by the school. Visitors will be issued with a Visitor's Pass. With the Visitor's Pass, visitors can then proceed to make purchases at the bookshop or proceed to the General Office for assistance on any other admin matters. Please put on the Visitor's Pass that is issued to you as you enter the school premises.

All visitors to school will not be allowed to venture off to the other parts of the school, especially the classrooms. This is one of the measures the school is taking to ensure the safety and security of our students in the school as well as to minimize disruptions to their learning.

13. Pedestrian Gates

The daily opening hours of all our pedestrian gates are as follows:



Gate	Monday to Friday (School Term)
Gate 1 (Main Gate)	6.30 a.m. to 5.30 p.m.
Gate 4	6.45 a.m. to 7.25 a.m.
Gate 5 (Facing HDB Blk 250 carpark)	6.45 a.m. to 7.25 a.m. 1.30 p.m. to 1.50 p.m. 4.15 p.m. to 4.45 p.m.

Please note that Student Care dismissal will be via Gate 5.

14. Traffic Conditions and Cooperation of Parents/Guardians

For the safety of our students, parents/guardians are not allowed to drive into the school compound at all times, except in cases of inclement weather where the drive-in gates will be opened to facilitate students' drop-off at the school porch. We strongly urge all parents/guardians who drive to park their cars at the car park next to the school at Blk 250 and guide their child/ward to enter by Gate 5.

Kindly note that parents/guardians should not park/stop their vehicles in front of the school along Jurong East St 24 to pick-up or drop-off our students. Not only is this illegal, but it also poses grave danger and inconvenience to pedestrians and other road users. Let us role-model consideration for our students and others.

15. Operating Hours of the General Office and Important Contact Details

The General Office is open on Monday to Friday from 7.00 a.m. to 5.00 p.m. The following are the contact details for the various services in the school:

Services	Operating Hours	Telephone
Dental Clinic	Mon – Thur: 8.00 a.m. – 5.00 p.m. Fri: 8.00 a.m. – 5.00 p.m. Lunch Time: 12.30 p.m. – 1.30 p.m. <i>Note: Clinic will be opened on alternate weeks starting from Week 1 onwards.</i>	6567 4427 (Kindly call the dental clinic to arrange for an appointment should your child/ward need emergency dental treatment before coming down to the clinic.)
School Book Shop: Pacific Bookstore Pte Ltd	Mon – Thur: 8.00 a.m. – 3.00 p.m. Lunch Time: 12.00 noon – 1.00 p.m.	6897 5927
School Bus: Chitson Transport	—	Office: 6765 0262 HP: 9666 5436 (Mr Yap)

16. CyberBytes

Extract is taken from <https://www.channelnewsasia.com/singapore/cyberbullying-damaging-young-lives-rampant-big-read-3238221>):

Cyberbullying is more rampant and damaging to young lives than we think. It's time to take it seriously...

A study released last month by the Pew Research Center found that nearly half of teens aged 13 to 17 in the United States have experienced cyberbullying. The most common form of cyberbullying they faced: offensive name-calling, false rumours, receiving unwarranted explicit images.

A study last year in Singapore showed similar findings. Unfortunately, a high percentage of the respondents said they would not take action because they believe it would not make a difference.

Our school has undertaken initiatives to develop help-seeking skills in our students. We want them to inform a trusted adult when they encounter uncomfortable situations in the Cyber World. For the last couple of years, the school-based “helpline”, CyberAid, has provided Yuhualites with a means of communicating the online issues they meet with our team of teachers. The school will provide Yuhualites with assistance and the necessary intervention in response to their submissions on CyberAid to ensure the well-being and safety of our students. We hope this channel will continue to provide our students with timely support and advice.

17. Term 1 & Term 2 Calendar of Activities

The list of activities, programmes and assessments which the school has planned for in Semester 1 is attached for your reference. Any changes or updates to the details of these events will be made in our next termly letter to parents or sent via Parents Gateway (PG).

18. Parents Gateway (PG)

Parents Gateway (PG) is the digital service that connects parents and schools on key administrative matters. It is a mobile application available on iOS and Android for our parents/guardians. It affords our school the timely convenience of updating parents on our school's programmes and for our parents/guardians to provide consent for their children to participate in school activities. PG is free-of-charge and access to the mobile application is restricted to parents and legal guardians who are Singpass holders. We encourage all parents/guardians to come onboard PG.

Should you need further clarification on any of the above matters, you can speak with your child/ward's teachers or contact the General Office at 6560 5062.

On this note, we would like to thank all our parents/guardians for your trust, strong support and partnership. Together, we can make this academic year a remarkable and transformative experience for our children.

Wishing you and your family a fantastic school year ahead!

Your Partners-in-Education,

Mrs Ruth Tai
Principal

Mrs Zoey So
Vice-Principal

Mr Noah Ong
Vice-Principal (Admin)

Yuhua Primary School

Calendar of Activities

Term 1, 2024

Note: Activities/ Events are tentative & subject to changes. Parents/guardians will be notified of the changes, if any.

Wk	Date	Time	Activity / Event	Venue	Target Group
1	1 Jan (Mon)	New Year's Day Public Holiday			
	2 Jan (Tues)	P1 First Day of School			P1 students
	3 Jan (Wed)	P2 to P6 First Day of School			All students
2	10 Jan (Wed)	Temperature-Taking Exercise (All students are to ensure their working Oral Digital Thermometers are with them.)			All students
	11 Jan (Thurs)	Start of P4 SwimSafer (On Thursday afternoons) More details will be shared with you.			P4 students
3	15 Jan (Mon)	After School	Training for Class Leaders More details will be shared with you.	School	Selected students
4	22 Jan (Mon)	After School	Start of P4 to P6 ASP	School	Selected P4 to P6 students
5	2 Feb (Fri)	Curriculum Hour	Photo-Taking for School Smart Card 2024	School	P1 and P6 students only
		After School	Visit to Road Safety Park	Road Safety Park	P6 students
6	9 Feb (Fri)	Chinese New Year School Celebrations (7.30 am – 10.30 am) (All students are encouraged to come in their traditional costumes as part of the festive learning experiences.)			All students
7	12 Feb (Mon)	Chinese New Year Public Holiday			
	13 Feb (Tues)	Chinese New Year Public Holiday (Day Off-in-lieu)			
	15 Feb (Thurs)	Total Defence Day School Celebrations			All students
	16 Feb (Fri)	LSM/LSP Briefing for Parents (Only for parents whose child/ward are selected for LSM/LSP) More details will be shared with you.			
	16 Feb (Fri) (Tentative)	After School	Visit to Road Safety Park	Road Safety Park	P4 students
8	19 Feb (Mon) to 23 Feb (Fri)	Curriculum Time	Term 1 Review Tests	School	P4 to P6 students
	23 Feb (Fri)	P4 and P6 Parent's Engagement (More details will be shared with you.)			
10	4 Mar (Mon)	After School	Student Leadership Workshop	School	Selected students
	8 Mar (Fri)	Curriculum Time	Annual Athletics Meet (Level Games) (P1 and P2 levels to follow their class timetable).	School	P3 to P6 students only
-	9 Mar (Sat) to 17 Mar (Sun)	March Term Break			

Yuhua Primary School
Calendar of Activities
Term 2, 2024

Note: Activities/Events are tentative & subject to changes. Parents/guardians will be notified of the changes, if any.

Wk	Date	Time	Activity / Event	Venue	Target Group
1	19 Mar (Tues), 21 Mar (Thurs), 22 Mar (Fri)	Curriculum Time	Art Museum-Based Learning Journey	TBC	P4 students
2	25 March (Mon)	After School	Start of P4 to P6 ASP	School	Selected students
	29 Mar (Fri)	Good Friday Public Holiday			
3	1 Apr (Mon)	Curriculum Time	Social Studies Museum-Based Learning Journey (More details to be shared)	Geylang Serai Heritage Gallery	P4 students
4	10 Apr (Wed)	Hari Raya Puasa Public Holiday <i>*Dismissal for Muslim students at 10.30 am on 9 Apr, Tues</i>			
	11 Apr (Thurs)	Hari Raya Puasa School Celebrations (All students are encouraged to come in their traditional costumes as part of the festive learning experiences.)			All students
5	17 Apr (Wed)	Curriculum Time	Social Studies Museum-Based Learning Journey (More details to be shared)	Kreta Ayer Heritage Gallery	P4 students
6	28 Apr (Fri)	Curriculum Time	Annual Prize Giving Day (More details to be given at a later date.)	School	All Students
7	29 Apr (Mon)	After School	Social Studies Museum-Based Learning Journey	Kreta Ayer Heritage Gallery	P4 students
	1 May (Wed)	Labour Day Public Holiday			
8	6 May (Mon) to 10 May (Fri)	Curriculum Time	Term 2 Review Tests	School	P3 to P6 students
9	14 May (Tues)	Curriculum Time	NAPFA for P6 students (5 stations)	School	P6 students
	16 May (Thurs)	After School	Student Leadership Workshop	School	Selected students
10	19 May (Sun) to 23 May (Thurs)	Internationalisation Programme - Thailand Overseas Immersion (More details to be given at a later date.)			Selected P5 students
	22 May (Wed)	Vesak Day Public Holiday			
	24 May (Fri)	Home-Based Learning (HBL)			All students
		Parent-Child-Teacher Conference (PCTC)			
-	25 May (Sat) to 23 Jun (Sun)	Mid-Term Break			